



Satisfy Professional's Needs

# Cordless Auto Feed Screwdriver BFR550

# Quick Shot!

Battery and Charger Sold Separately.

## EXTREME STAMINA

Life time work volume  
**280%**  
In comparison with Makita NiCd 2.0Ah batteries



### OPTIMUM CHARGING SYSTEM

Makes battery life longer because this charging system takes care of battery by following functions.

- Communicates with individual battery.
- Recognizes ID of battery and its history.
- Analyzes its condition: Battery may have been abused by heat or over-discharging or weakened by cycle age.
- Knows how to look after each MAKSTAR battery to maximize cycle life = WORK VOLUME.
- Charges optimum and gentle way with Active 3 Controls:



Traditional Charging Method



Cools down inside battery

18V Lithium-Ion Battery BL1830



Charger: DC18BA  
Charging time **22min.**

### LIGHT WEIGHT & COMPACT



MAKITA 18V LXT Ni-MH 3.0Ah

ANYTIME CHARGE

NO MEMORY EFFECT  
No discharging required

LONGTIME STORAGE

LOW SELF-DISCHARGE  
Low self-discharge rate

SHOCK ABSORBING

HEAVY DUTY PACK  
Shock absorbing

FIRM HOLDING

TRIPLE COVER CT  
Firm holding

### Accessories



Extension handle  
Part No. 19450-1



Phillips bit 5pc per pkg.

For Model	Size	Length (mm)	Part No.
BFR550	No.2	162	B-10461

### Cordless Auto Feed Screwdriver

BFR550

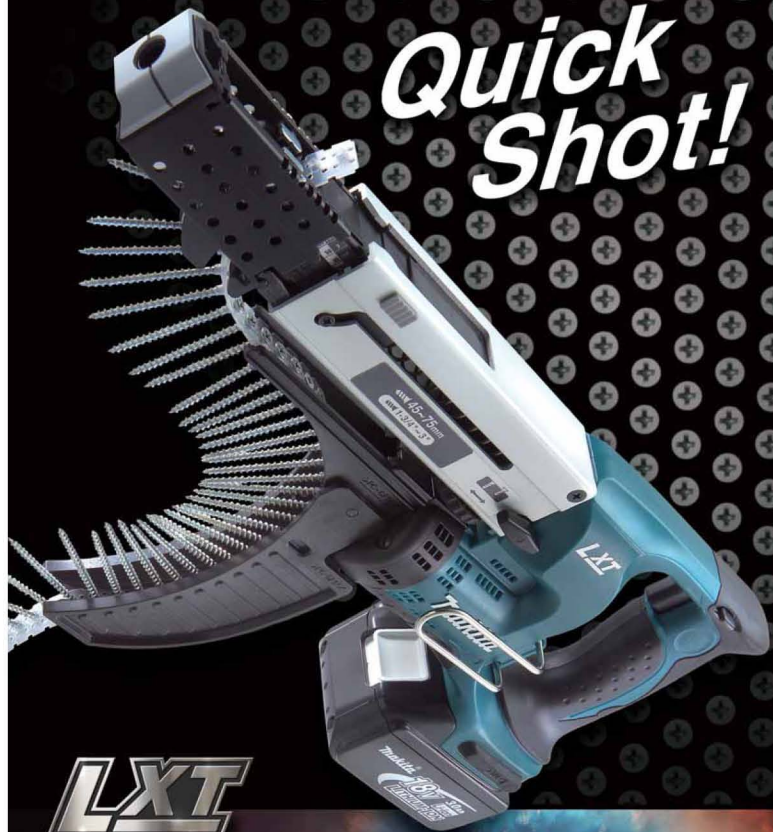
440



Reversing

Capacity	Drywall screw	BFR550
	4 x 25 to 55mm	
Bit size	Hex Shank	6.35mm
	No load speed (rpm)	4,000
Dimensions	(L x W x H)	426 x 69 x 238mm
	Net weight	2.3kg
	Voltage	18V

Standard Equipment  
BIT (3pcs.)



Lithium-ion eXtreme Technology

# More Reliable Casing Attachment



Stopper base with anti-tilt device for preventing screws from swaying

Indicator line for feeding position

Adjustable Stopper Base with 7 settings for different screw lengths

Sturdy Aluminum Casing

Casing can be removed/ installed without tool.

Reverse switch Operable by One Hand

Rubber cap securely fixed to Stopper Base for accurate positioning and preventing slip

## Quick Shooting

### with Makita's New Silent Clutch

Our New Silent Clutch features extremely high durability while ensuring high operation efficiency with direct force transmission in reverse rotation.

Less noise at the end of driving process

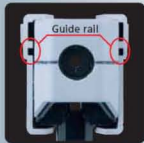
The utmost durable clutch



When the bit pushes screw, synchronized rotation starts for smooth engagement.



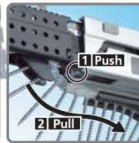
Anti-tilt device for accurate positioning and preventing swaying



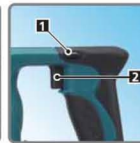
Dust-proof construction for smooth sliding action  
Guide rail is provided for smooth sliding.



Ergonomically designed grip  
Provides more control and comfort.



Screw strip can be removed also in the direction of the arrow by pushing button.



1 Reverse Switch Operable by One Hand  
2 Lock-On Button for Continuous Operation



Screw Guide  
// Designed to prevent collated screw strip from getting tangled  
/// Foldable for easy transport and storage

**LXT**  
LITHIUM-ION

Accept screw length up to 55mm



**BFR550**

**4,000/rmin**

Capacity:  
4mm X 25mm to 55mm

**18V 3.0Ah**  
LITHIUM-ION