



Adapted for
SDS-MAX bits

Torque limiter

One touch sliding chuck
for easy bit changes

Easy-to-operate operation mode change lever

- The mode lock lever of the current HR4011C series is eliminated for easier mode change.
- Located on the top of the motor housing for reduced possibility of breakage even if the machine is carelessly laid.

Soft grip
provides more
comfort and
control.

LED power light that
indicates trouble with the
electric circuit

LED service light that indicates
when to replace carbon brush

Variable speed control by dial

Electronic with:
Constant speed control
Soft start for reducing start-up torque

Photo: HR4013C

Photo: HR4013C

Accessories

Dust Extractor Attachment Set

The dust extractor attachment can be attached without replacing the side handle.

Part No. 196536-6

Drilling mode



Hammering mode

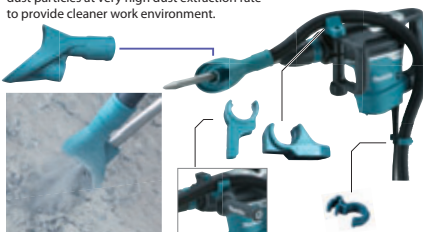


Dust Extractor Attachment Set

Hammering only

Connected with vacuum cleaner, this attachment is able to extract fine dust particles at very high dust extraction rate to provide cleaner work environment.

Part No. 196571-4



Rotary Hammer

HR4013C / HR4003C 40mm Adapted for SDS-MAX bits

350

- ☒ Double Insulation
- ☒ Constant Speed
- ☒ Variable Speed
- ☒ Soft Start
- ☒ SDS-MAX Shank
- ☒ Carrying Case
- ☒ Torque Limiter

	HR4013C	AVT & SOFT NO LOAD	HR4003C
Continuous rating Input	1,100W		1,100W
Capacity	Concrete (with T.C.T. bit) : 40mm Concrete (with Core bit) : 105mm		Concrete (with T.C.T. bit) : 40mm Concrete (with Core bit) : 105mm
Impacts per minute (ipm)	1,450 - 2,900		1,450 - 2,900
No load speed (rpm)	250-500		250-500
Dimensions (L x W x H)	479x112x263mm		479x106x263mm
Net Weight	6.8kg		6.2kg
Power supply cord	5.0m		5.0m

Standard Equipment : Depth Gauge, Side Handle, Bit Grease (Tool does not come with bit.)

Makita

Rotary Hammer 40mm
HR4013C / HR4003C



Adapted for
SDS-MAX bits

ADVANCED Vibration Control



**AVT & SOFT
NO LOAD**
ANTI VIBRATION TECHNOLOGY

Extra Comfort with unrivalled low level of vibration

(Tool does not come with bit.)

Photo : HR4013C

AVT

ANTI VIBRATION TECHNOLOGY

Comparison of Vibration level* and Time to reach ELV (Exposure Limit of Vibration)**

HR4013C	5.0m/s ²	480min.
Predecessor Model	7.5m/s ²	213min.

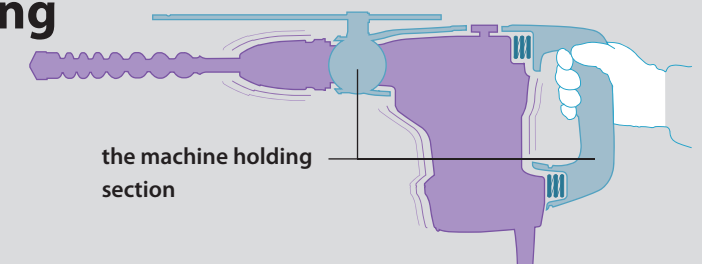
*It is known as the tri-axial value and value at Directive of A(8).

**It means the maximum amount of vibration that an operator may be exposed to on any single day.

Unrivalled low level of vibration

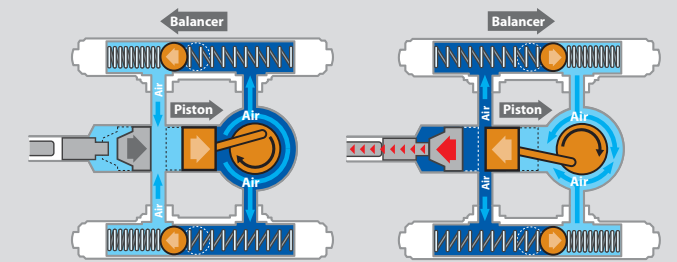
Vibration absorbing housing (HR4013C)

This is the new AVT mechanism advanced from the current "Vibration absorbing handle". The level of vibration is further reduced by completely separating the machine holding section from the motor/transmission section



Active dynamic vibration absorber (HR4013C)

ensures operation with extremely low vibration. Allows tool design with flat body sides for better handling.



Damper spring

absorbs reaction force caused by drill bit at the moment of impact.

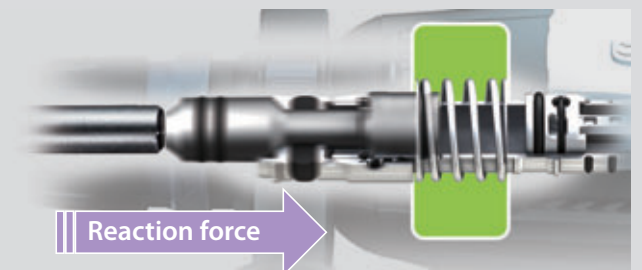


Photo : HR4013C (Tool does not come with bit.)



Adapted for SDS-MAX bits

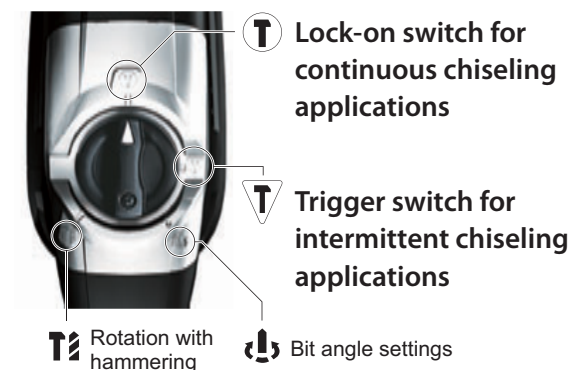
High performance

Drilling efficiency
20% higher
with 32mm diameter bit

Chipping efficiency
45% higher
with bull point

Compared with our predecessor model

lock-on in hammering mode



Soft no load function (HR4013C)

- reduces vibration of tool body when idling, accordingly decreases the amount of vibration to operator's hands during a day's operation.

- minimizes deflection of bit tip from aiming point when starting chipping.

SOFT NO LOAD

