

100th

ANNIVERSARY

Makita®

September 2012

www.makita.co.za

Edition 27

RUTHERFORD

100 YEAR ANNIVERSARY

In the early 60's Rutherford became one of three importers of Makita tools in South Africa and from 1985, they were appointed as the sole distributor of Makita which had the result of increased sales. Today Makita is one of the brand leaders in the Southern Africa region. Below is some Rutherford timeline highlights:

A E Rutherford Limited, an engineering merchant, was established in 1912 by Mr AE Rutherford, situated at 76 Bree Street, Cape Town. The company was purchased in 1924 for 2000 Pounds by the Gearing family, who were to own and manage the business until selling to Mitchell Cotts in 1977. Rutherford can claim to be one of the survivors of the "old Cape Town family businesses", established early in the 20th century, although no longer a family business today.

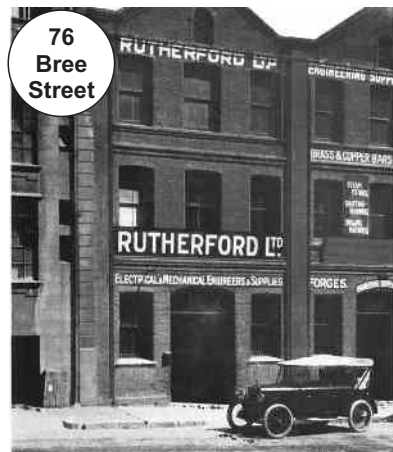
As the company expanded, a few moves were made:

1929 moved to 90 Bree Street, Cape Town.

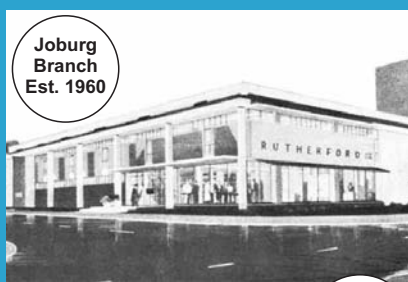
1951 moved to 80 Bree Street, Cape Town.

1973 moved to Bofors Circle, Epping.

1998 moved to Jan Van Riebeeck Drive, Beaconvale.



76 Bree Street



Joburg Branch Est. 1960



Cape Town, Epping 1973



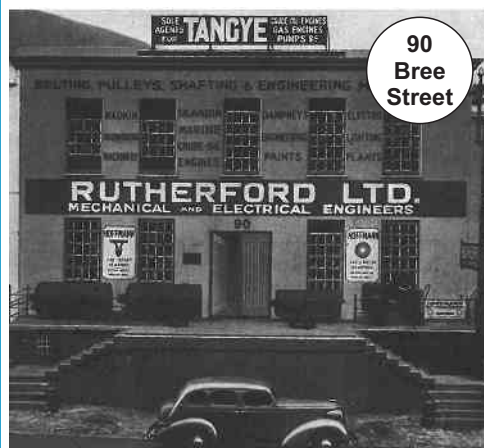
Goodwood Show 1978



Kimberley Dealer Display 1984



Joburg Branch Today 2012



90 Bree Street

Although originally a Cape Town based company, branches throughout the country were later established:

1950 Herbert Gearing & Sons (Port Elizabeth Branch) established.

1960 Johannesburg Branch established.

1969 The business of W D Hearn & Co Pty Ltd, was purchased and later sold to the management team in 1989.

1972 Durban Branch established.

1999 The business of Wilbur Ellis was purchased and the Rutherford Marine Division was born.

Over the past 100 years, Rutherford has become a household and well respected name nationally and internationally.

The building at 90 Bree Street, which has in the rear courtyard, one of the oldest vines in the Cape, was declared a National Monument and in 1997 was converted into a classic Cape Hotel. The extensive renovations have enhanced the many features of this old historical building, once a Rutherford "home".

Ownership of Rutherford has changed over the years:

1912 Established, **1924** sold to Mr H E Gearing,

1977 Sold to Mitchell Cotts,

1983 Sold to Landlock / BBA, **1989** Sold to Valard / Hudaco.



Did You Know

Back in the early years, Rutherford had a range of electric hammers, called Van Dorn.

Today, 2012, Rutherford stocks Rotary Hammers from Makita with the latest technology such as "AVT", Anti Vibration Technology.



Makita

RT0700CX2 Mini Router

Makita compact router wins "editors' choice" award from Popular Mechanics

Popular Mechanics Magazine awarded the Makita 710W Ultimate Mini Router with their 2012 Editors' Choice Award. Popular Mechanics Magazine's annual Editors' Choice Award recognizes the year's most innovative power tools.

The Popular Mechanics editor had this to say about the Makita RT0700CX2: "You know there are tools destined to become a classic from the moment you pick them up. This Makita router is one of them. Powered by a 710W motor, it's the size and weight of a laminate trimmer, but it comes with all the features and accessories that we've come to expect from tools twice its size. Its three bases, accessories and variable electronic speed control allow you to match the tool to the job. If there's an operation you can do with a 6.35mm shank router bit, this tool is up to the job." The tool comes with 3 different base assemblies for added versatility. Trimmer base: Round base assembly for smooth and fast cutting with easy handling. Plunge base: Precision cutting depth adjustment with plunge capacity of 0-35mm. Tilt Base: Ergonomic body grip easy-to-grasp with one hand. Tilting capacity of -30 to 45°.



New Product TM3000CX2 Multi Tool

Multi tools can be extraordinarily useful tools. At first sight they may appear to be aimed at the model maker, with their small blades and apparently undramatic action. But don't be fooled: they can do a great deal.

Their slim bodies and narrow blades allow them to be used in situations where no other tool could fit.

The design of their blades mean that they can cut flush to an adjoining surface, making them especially useful when fitting laminate doors or installing fitted furniture.

They are also particularly good at plunge cutting. With a hacksaw blade fitted they can cut pipework or bolts and with a sanding head fitted they can smooth in the tightest corner.

Courtesy of The Woodworker



Compatible with all
OIS (Oscillating
Interface System) accessories



**Wide selection
of accessories
available for
various applications**

Multi Tool TM3000CX2



Double Insulation



Soft Start



Constant Speed



Variable Speed



Carry Case

Continuous rating Input	320W
Oscillations per minute	6,000 - 20,000
Dimensions(L x W x H)	275 x 64 x 92mm
Net weight	1.4kg
Power supply cord	5.0m

Comes standard with:

2 x Segment Saw blades, 4 x Plunge Cutting Saw Blades,
Abrasive Paper Delta Red 60, Abrasive Paper Delta Red 100,
Abrasive Paper Delta Red 150, Sanding Pad, Dust Attachment Set,
Scraper 52mm, Universal Adapter, Hex Wrench

EXTRA VERSATILE

Cape Town Corporate Games

The Corporate Games is an ultimate mix of sport, business and tourism. From the 14th to 17th of June 2012, Cape Town hosted the annual multi-sport festival for athletes who love health, fitness, sport and its real values. 1100 participants in various sporting categories attended.

In Toronto, Canada late in 1985 Dr Maureen Johnston, the Founder of the World Masters Games conceived the idea of the World Corporate Games.

Dr. Johnston saw that there was a need for a project that offered everyone of every age and ability the chance to play sport on a worldwide basis, represent a team, wear its colours and be proud to be part of a multi-sport festival for businesses, organisations, institutions and societies of every size and kind. The Games were to have no barriers to participation and would be the first open equally in every respect to women and men. They would also be the first to integrate participants with disabilities. She founded Sport For Life, an organisation dedicated to bringing global sporting competition within the reach of everyone. The first Corporate Games was held in San Francisco in 1988 and was an instant success. More recently, licenses have been granted to organisations in India, Japan, Mexico, South Africa and many other interesting places throughout the world from Cornwall to Auckland and New Guinea to Nigeria. From its conception in Toronto the Corporate Games is a truly global movement of weekend sports warriors, those everyday athletes who get fit for business and for life through participation in sport that can last a lifetime.



Rutherford Cape Town entered two teams in the Games held recently in June 2012. A team in the Soccer 5's and a team in the Karting. In the Karting, Rutherford managed to secure a 3rd overall place which is not too bad considering that twelve teams entered.

There is no limit to the number of people who may represent an organisation or to the number of organisations entering the Games. Multinational and national corporations, medium and small businesses, partnerships, agencies, societies, clubs, institutions and organisations are eligible to enter the Games. Full and part time employees, members of the board, managers, retirees, consultants, agents, clients, families, friends and guests may be members of the team. Every first, second and third place finisher receives a Games medal to recognise personal achievement.

Organisations are allocated to a division based on the number of participants they enter. This feature ensures excellent competition between organisations regardless of their team size.



54 sports disciplines are part of the official list of the Corporate Games. The program of sports offers opportunities for individuals as well as team competition. These sports are played widely throughout the world. The Corporate Games enables everyday athletes of every ability the chance to remain active in sport for a lifetime. Capitalise on corporate benefits, create employee confidence, loyalty and team spirit, increase name and brand recognition, develop contacts with leaders and representatives of national and multinational businesses, reach new clients, create new business and meet new customers. Experience the ultimate mix of sport, business and tourism. It's one of the best investments an organisation can make!

Rutherford Teams

Rutherford entered Makita sponsored teams in the Soccer five a side and karting events. Great fun was had by all. Next Corporate Games in South Africa is in Cape Town 6 to 9 June 2013.



Below: Rutherford Cape Town staff receiving their well deserved medals for coming third in the Karting event.



Grinder Accessories**NEW**

INOX Stainless Steel Grade Ultra- thin Cutting Discs - these Cutting Discs are made to the highest standard to cut fast through Stainless Steel, reducing the amount of clean up work required. Makita cutting discs for stainless steel and acid resistant steel are made with A46 – a finer grade of aluminium oxide and have as narrow cutting width of not more than 1mm. These narrow discs can also be used for cutting other metals and will result in a fast fine cut, with minimal burring. Using these discs also extends the useable charge time of a cordless grinder.

B-12217

115mm Thin
INOX Disc

**B-12273**

230mm Thin
INOX Disc

**Flap Discs**

Layers of coated abrasive fixed onto a supported backing. A new face of abrasive is revealed as the disc wears, ensuring constant performance throughout the life of the disc. The range is suitable for a wide range of applications and materials including wood, paint, metals and stone. Lasting up to 10 times longer than conventional discs, light weight and fine finish.

D-27458

115mm Flap Disc

**D-27551**

180mm Flap Disc



Grinder Corner

How to Replace the Brushes on a Makita Grinder

If you use your grinder frequently, and want it to last more than a year or two, then at some point you're going to have to replace the brushes. When brushes wear down, your tool can lose continuity, which means it won't run correctly-if it runs at all. Luckily, brushes are inexpensive and the repair is an easy one. This article will show you how to replace the brushes in a Makita grinder.

1. Remove the covers

Remove the screws that secure the cover. Remove the top cover, the lock button, then the bottom cover.



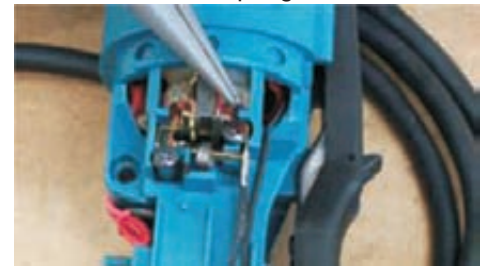
Use your needle-nose pliers to remove the wire lead.



Repeat these steps on the other side.

**2. Remove the old brushes**

Move the brush spring to the side.



Pull the brush away from the holder.

**3. Install the new brushes**

Slide the brush into place in the holder.



Set the brush spring in place over the brush.



Connect the wire lead to the grinder.



Repeat these steps on the other side.

**4. Replace the covers**

Set the back cover into place and position the lock button back in the tool. Then attach the top cover and tighten the screws to finalize the repair.

After replacing the brushes allow the machine to run under no load for ten minutes so that the brushes bed themselves in, eliminating high spots.

And that's how easy it is to replace the brushes on a Makita grinder. This repair will help maintain strong continuity in your tool and will keep you working rather than waiting on a repair shop.

New Product - Cordless**Maktec MT080E Hammer Drill 10mm**

Torque setting:
16 Stage + drill mode

Mechanical 2-speed gearing

- High speed mode for drilling in light duty applications.
- Low speed mode for heavy duty applications requiring high torque

Li-ion 14.4v

Battery for Model:
MT080E

L1451 1.1Ah

Charger: DC1851

Charging
Time
**60
min.**



Variable speed control
by trigger

Rubberized soft grip
provides more
control and reduced fatigue.

**Comes with
2 x 1.1Ah
Li-Ion 14.4V
Batteries &
Charger**



Li-ion
Lightweight Lithium-ion Series



Variable
Speed



Electric
Brake



Keyless
Chuck



Carry
Case



Reversing



Mechanical
2 - Speed



Torque Setting 16

Capacity

Steel 10mm
Wood 25mm
Masonry 10mm

Impacts per minute

Hi: 0-21,000
Lo: 0-6,000

No load speed

Hi: 0-1,400r/min
Lo: 0-400r/min

Max. fastening torque

Hard/Soft: 30 / 14N.m

Dimensions (L x W x H)

216 x 82 x 236mm

Net weight

1.5kg

Editor's Notes

We all would like to congratulate Rutherford on achieving their 100th anniversary. A momentous occasion. A cornerstone of the Rutherford sales policy since day one, and as important today as then, is the sole importation and distribution of strong and respected World Brand names synonymous with the quality, reliability and service.

A note in the old board meeting record book, dating back to the 1920's states the company's sales policy as follows: "The policy of the business is to sell quality goods at fair prices and to give every customer a fair deal."

Today, 100 years later, this policy still prospers and is the foundation upon which Rutherford Management and Staff build continually.



Rutherford Joburg (Head Office 128 employees)

Rutherford Centenary Competition

**WIN your share
of R100000's
worth of tools**

3 x 1st Prizes

Collection of Makita Power Tools
Retail Value of R17 919.00 each

3 x 2nd Prizes

Collection of Makita Power Tools
Retail Value of R10 924.00 each

3 x 3rd Prizes

Collection of Makita Power Tools
Retail Value of R5086.00 each

Simply purchase any Makita tool (excluding Makita 6723DW, BCL180Z, BML186 and Maktec tools) during the Rutherford 100 Year Centenary Celebration period (Starts 3rd September 2012 and ends 11th December 2012)

More details on www.makita.co.za